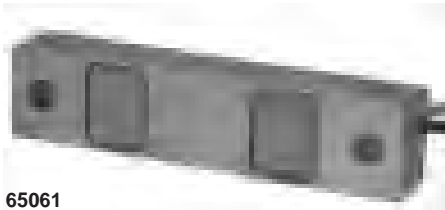


Truck



65061



Load Button



Bushing



Load Pin



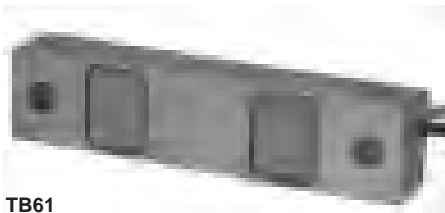
Support Pin

65061 Beam only - Sensortronics

Interchangeable with Fairbanks Rodan Truck scale load cells. Load cell does not have a load button. It must be ordered separately or the existing button may be used.
3 mv/v, 0.03% nonlinearity, 700/700 ohm, 35 ft cable, nickel plated steel or stainless steel, IP67.

NTEP 87-053 M IIIIL 10,000 div.

Part Number	Fairbanks	Capacity	Weight
Nickel plated steel			
65061A-40K	90814-60	40,000 lb	17 lb
65061A-50K	91088-60	50,000 lb	17 lb
Stainless steel			
65061S-50K-1107	-----	50,000 lb	19 lb
Service Parts			
61733 Load button w/ 54798 pin			2 lb
61729 Load pin			3 lb
61770 Support pin		(2) per cell	2 lb
61833 Bushing		(4) per cell	1 lb



TB61

TB61 Beam only - Totalcomp

Interchangeable with Sensortronics 65061, Fairbanks Rodan 90814(40K) & 91088 (50K) load cells. Load cell does not have a load button. It must be ordered separately or the existing button may be used.

3 mv/v, 0.03% nonlinearity, 700/700 ohm, 50 ft 4 cond cable, nickel plated steel, IP67.

Part Number	Fairbanks	Capacity	Weight
TB61-40K	90814-60	40,000 lb	16 lb
TB61-50K	91088-60	50,000 lb	16 lb
Service Parts			
Load button	61733		2 lb
Load pin	61729		3 lb
Support pin	61770	(2) per cell	2 lb
Bushing	61833	(4) per cell	1 lb

Jun

Jun

Oct

Aug



80310



80310 - Artech

Replacement for CMI Truck Scale load cells. Interchangeable with Sensortronics 65040.

3 mv/v, 0.03% nonlinearity, 700/700 ohms, 60 ft 4 cond cable, nickel plated steel, IP67.

NTEP 90-083 M IIIIL 10,000 div

Part Number	Capacity	Weight
80310-50K-SE	50,000 lb	15 lb
80310-50K	50,000 lb	18 lb
80310-60K-SE	60,000 lb	15 lb
80310-60K	60,000 lb	18 lb
80310-75K-SE	75,000 lb	15 lb
80310-75K	75,000 lb	18 lb

SE = Small envelope

Truck

80310 - Artech

Interchangeable with Sensortronics 65040
 3 mv/v, 0.03% nonlinearity, 700/700 ohm, 40 or 60 ft 4 cond cable, stainless steel, IP67.
 NTEP 90-083A2 III 10,000 div

Part Number	Capacity	Weight
SS80310-20K	20,000 lb	20 lb
SS80310-30K	30,000 lb	20 lb
SS80310-35K	35,000 lb	22 lb
SS80310-40K	40,000 lb	25 lb
SS80310-50KSE	50,000 lb	25 lb
SS80310-50K	50,000 lb	28 lb
SS80310-60K	60,000 lb	28 lb
SS80310-65K	65,000 lb	28 lb
SS80310-75KSE	75,000 lb	28 lb
SS80310-75K	75,000 lb	28 lb
SS80310-100K	100,000 lb	30 lb
SS80310-125K	125,000 lb	30 lb



80310



Dimensions in inches

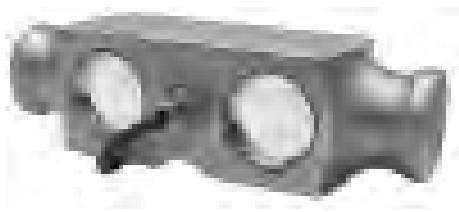
Capacity	A	B	C	D	E	F	G	H	J
20K-60KSE	8.25	7.25	2.44	1.94	2.00	1.63	0.50	1.75	0.50
50K-75K	11.50	10.00	2.94	1.94	2.20	1.70	0.75	2.00	1.00
90K-200K	14.50	12.50	2.90	3.86	3.20	2.44	1.50	2.75	1.50



80210 - Artech

Interchangeable with RTI 5223
 3 mv/v, 0.03% nonlinearity, 700/700 ohm, 60 ft 4 cond cable, nickel plated steel w/welded covers, IP67.
 NTEP 90-083 M III 10,000 div

Part Number	Capacity	Weight
80210-50K	50,000 lb	21 lb
80210-65K	65,000 lb	21 lb
80210-100K	100,000 lb	21 lb



80210



Dimensions in inches

Capacity	A	B	C	D	E	F	G	H	J
20K-60KSE	8.25	7.25	2.44	1.94	2.00	1.63	0.50	0.25	0.50
50K-75K	10.25	8.50	2.90	2.90	2.40	2.05	1.00	0.25	1.00
90K-200K	11.50	10.00	3.40	3.40	2.75	2.35	1.50	0.40	1.50



Truck

DB-50000 - Cardinal

Original load cell used in Cardinal Truck scales.
 2 mv/v, 0.03% non linearity, 790/700 ohms, 35ft integral multiconductor cable, stainless steel. IP67.
 NTEP 97-133A2 M IIIIL 10,000 div

Part Number	Capacity	Weight
DB-50000	50,000 lb	20 lb



DB-50000



Dimensions in inches

Capacity	A	B	C	D	E	F	G	H
50K-75K	8.25	7.25	0.93	1.80	2.50	2.00	0.38	0.75



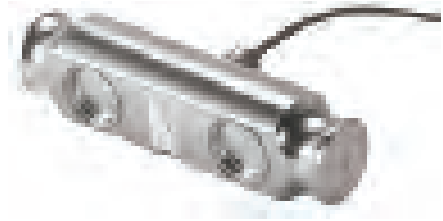
Mount shown for illustration only.

Truck

CG-DB-5000S - Coti Global

Interchangeable with Cardinal DB-50000, RLDB50000S.
2 mv/v, 0.03% non linearity, 700/ ohms, 50ft braided shield cable, stainless steel. IP67.
FM Approved

Part Number	Capacity	Weight
CG-DB-5000S	50,000 lb	20 lb



CG-DB-5000S

Dimensions in inches

Capacity	A	B	C	D	E	F	G	H
50K-75K	8.25	7.25	0.93	1.80	2.50	2.00	0.38	0.75



Truck



CG-STR



CG-STR - Coti Global

Interchangeable with Epelsa STR. Alloy steel.
 3 mv/v, 0.03% nonlinearity, 700/700 ohms, 50ft 4 cond cable, environmentally protected.
 NTEP 03-079 M III L 10,000 div

Part Number	Capacity	Weight
CG-STR-40K	40,000 lb	14 lb
CG-STR-50K	50,000 lb	14 lb



Dimensions in inches

Capacity	A	B	C	D	E	F	G
40K-50K	10.50	8.75	0.88	2.00	0.61	1.91	0.78



CG-STR1



CG-STR1 - Coti Global

Interchangeable with Fairbanks Rodan 90814, 91088.
 3 mv/v, 0.03% nonlinearity, 700/ohms, 50ft 4 cond cable, alloy steel.
 NTEP 03-079 M III L 10,000 div

Jun

Part Number	Capacity	Weight
CG-STR1-40K	40,000 lb	14 lb
CG-STR1-50K	50,000 lb	14 lb



Dimensions in inches

Capacity	A	B	C	D	E	F	G
40K-50K	10.50	8.75	0.88	2.44	1.22	1.94	0.78

Truck

BE40 - Coti Global

Interchangeable with Sensortronics 65040.
 3mv/v, 0.03% nonlinearity, 700/700 ohms, 50 ft braided shield cable, nickel plated steel.
 NTEP 03-037 M III 6,000 div, III L 10,000 div

Part Number	Capacity	Weight
BE 40-25K	25,000 lb	18 lb
BE 40-40K	40,000 lb	18 lb
BE 40-50KSE	50,000 lb	18 lb
BE 40-60KSE	60,000 lb	18 lb
BE 40-50KLE	50,000 lb	18 lb
BE 40-60KLE	60,000 lb	18 lb
BE 40-75K	75,000 lb	18 lb
BE-40-75KSE	75,000 lb	15 lb
BE 40-100K	100,000 lb	60 lb
BE 40-125K	125,000 lb	60 lb

Jun

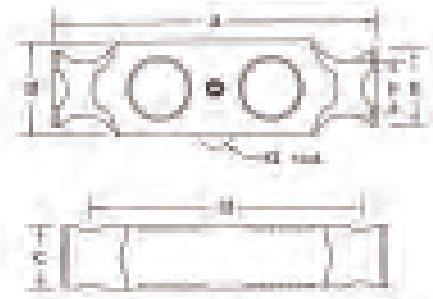


BE40



Dimensions in inches

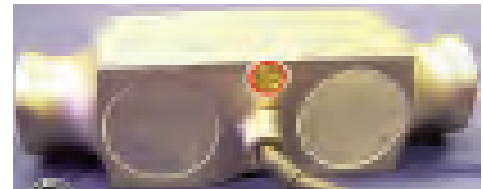
Capacity	A	B	C	D	E	F	G
25K-75KSE	8.25	7.25	1.94	2.44	2.00	1.63	0.50
50K-75K	11.50	10.00	1.94	2.94	2.20	1.70	1.00
100K-125K	14.50	12.50	2.90	3.86	3.20	2.44	1.50



CG-5223 - Coti Global

Interchangeable with RTI model 5223
 3mv/v, 0.03% nonlinearity, 700/700 ohms, 50 ft 4 cond cable, nickel plated steel.
 NTEP 03-044 M III 10,000 div

Part Number	Capacity	Weight
CG-5223-50K	50,000 lb	21 lb
CG-5223-65K	65,000 lb	21 lb
CG-5223-100K	100,000 lb	21 lb

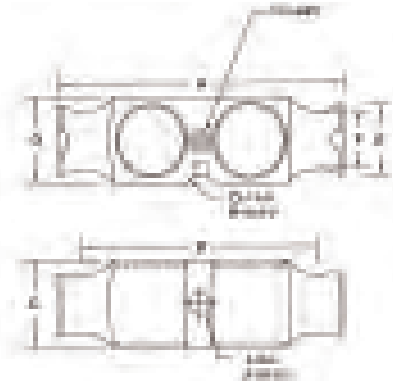


CG-5223

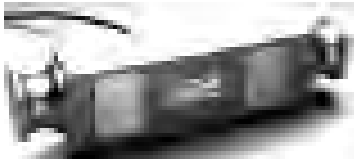


Dimensions in inches

Capacity	A	B	C	D	E	F	G	H	I	J
40K-125KSE	10.25	8.50	3.00	3.00	2.40	2.07	1.00	1.00	0.75	0.78



Truck



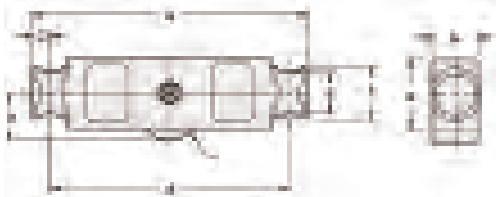
65040



65040 - Sensortronics

Replacement for CMI Truck Scale load cells and Thurman TSC840 load cells.
3 mv/v, 0.05% nonlinearity, 700/700 ohms, 35 ft 4 cond cable, nickel plated steel, IP67.
NTEP 86-045 M IIIIL 10,000 div

Part Number	Capacity	Weight
65040A-25K	25,000 lb	17 lb
65040A-40K	40,000 lb	17 lb
65040A-50K (Small Envelope)	50,000 lb	17 lb
65040A-50K	50,000 lb	18 lb
65040A-60K	60,000 lb	18 lb
65040A-75K	75,000 lb	18 lb
65040A-100K	100,000 lb	60 lb
65040A-125K	125,000 lb	60 lb



Dimensions in inches

Capacity	A	B	C	D	E	F	G	H	I	J
25K-40K	8.25	7.25	0.50	1.75	1.63	2.00	2.44	1.94	0.50	0.50
50K-75K	11.50	10.00	0.75	2.00	1.70	2.20	2.94	1.94	1.00	0.75
100K-125K	14.50	12.50	1.00	2.75	2.44	3.20	3.86	2.90	1.50	1.00

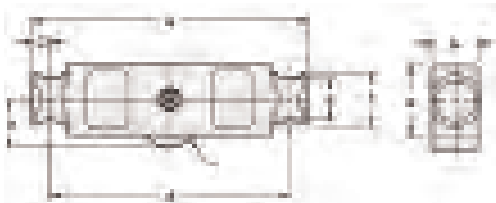


TDE40

TDE40 - Totalcomp

Replacement for CMI Truck Scale load cells. Interchangeable with Sensortronics 65040, Airway AW900.
3 mv/v, 0.03% nonlinearity, 700/700 ohms, 35 ft 4 cond cable, nickel plated steel, IP67.

Part Number	Capacity	Weight
TDE40-25K	25,000 lb	16 lb
TDE40-40K	40,000 lb	16 lb
TDE40-50K-SE	50,000 lb	16 lb
Small envelope w/120 ft cable		
TDE40-50K	50,000 lb	19 lb
TDE40-60K	60,000 lb	19 lb
TDE40-75K	75,000 lb	19 lb
TDE40-100K	100,000 lb	45 lb
TDE40-125K	125,000 lb	45 lb



Dimensions in inches

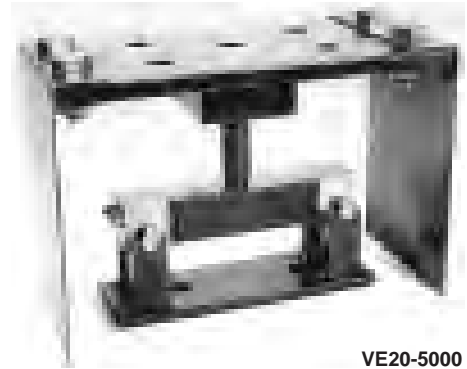
Capacity	A	B	C	D	E	F	G	H	I	J
25K-40K	8.25	7.25	0.50	1.75	1.63	2.00	2.44	1.94	0.50	0.50
50K-75K	11.50	10.00	0.75	2.00	1.70	2.20	2.94	1.94	1.00	0.75
100K-125K	14.50	12.50	1.00	2.75	2.44	3.20	3.86	2.90	1.50	1.00

Truck

VE20 Heavy Duty Mount and Truck Cell - Epelsa -

Service parts only.

Part Number	Capacity	Weight
4300-0017		2 lb



VE20-5000

LC32 (STR) beam only - Epelsa

Load cell has load button installed.
 3 mv/v, 0.05% nonlinearity, 700/700 ohm, 50 ft cable, nickel plated steel.
 NTEP 92-030 M IIIIL 10,000 div.

Part Number	Equal	Capacity	Weight
LC32-40K	STR-40K	40,000 lb	14 lb
LC32-50K	STR-50K	50,000 lb	14 lb

Service Parts

Load button with guide pin for LC32 load cell	1 lb
4300-0020 Support pin for LC32 mount	8 lb
1300-0003 Retaining clip for LC32 mount	1 lb
603 Load button w/o guide pin 1" dia x 5/8" H	1 lb
Support pin w/o cotter pins	1 lb



LC32-50K



4300-0003 support pin
w/optional 1300-0003 retaining clips



Load button
w/guide pin



Support pin w/o cotter pins



Load button
w/o guide pin

TB32 beam only - Totalcomp

Interchangeable with Epelsa LC32 (STR) double ended beam load cells. Load cell has load button installed.
 3 mv/v, 0.03% nonlinearity, 700/700 ohm, 50 ft cable, nickel plated steel, IP67.

Part Number	Capacity	Weight
TB32-40K	40,000 lb	14 lb
TB32-50K	50,000 lb	14 lb

May
▼



TB32

Truck



65058-SS

65058 SS Beam only - Sensortronics


3 mv/v, 0.05% nonlinearity, 700/700 ohms, 25 ft 4 cond cable, **stainless steel**, w/welded gauge cover caps, IP67.

NTEP 20,000 lb thru 125,000 lb.

NTEP 86-046 M IIIIL 10,000 div

Part Number	Capacity	Weight
65058A-20K-SS	20,000 lb	9 lb
65058A-25K-SS	25,000 lb	9 lb
65058A-40K-SS	40,000 lb	11 lb
65058A-50K-SS	50,000 lb	19 lb
65058A-60K-SS	60,000 lb	19 lb
65058A-75K-SS	75,000 lb	19 lb

Dimensions in inches



Capacity	A	B	C	D	E	F	G	H	I	J
10K-25K	7.75	6.50	1.38	1.69	1.63	1.70	1.94	0.68	0.75	0.90
40K	10.25	8.50	1.93	1.94	2.00	2.10	2.44	0.81	1.00	1.12
50K-75K	10.25	8.50	1.93	2.44	2.54	2.65	2.94	1.06	1.00	1.37
100K-125K	15.25	12.75	3.13	2.90	3.30	3.43	3.86	1.62	1.50	1.80
150K-200K	19.25	15.25	4.00	3.80	4.44	5.12	5.80	1.62	2.00	2.37



CG-58 Beam Only

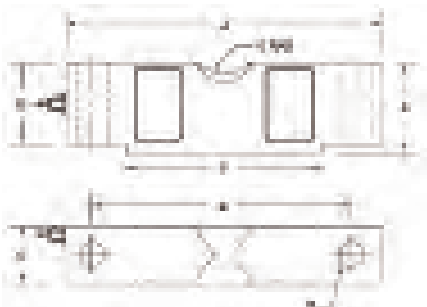
CG-58 Beam Only - Coti Global

Interchangeable with Sensortronics 65058-SS.

3.0 mv/v, 0.05% nonlinearity, 700/700 ohms, 50" braided shield cable, alloy steel. IP67.

Part Number	Capacity	Weight
CG-58 10K	10,000 lb	12 lb
CG-58 20K	20,000 lb	12 lb
CG-58 25K	25,000 lb	12 lb
CG-58 40K	40,000 lb	15 lb
CG-58 50K SE	50,000 lb	15 lb
CG-58 50K	50,000 lb	15 lb
CG-58 60K	60,000 lb	19 lb
CG-58 75K	75,000 lb	19 lb
CG-58 100K	100,000 lb	40 lb
CG-58 125K	125,000 lb	40 lb

Dimensions in inches



Capacity	A	B	C	D	E	F	G	H
10K-25K	7.75	6.50	1.69	1.70	1.94	5.00	0.75	0.68
40K-50KSE	10.25	8.50	1.94	2.10	2.44	6.39	1.00	0.81
50K-75K	10.25	8.50	2.44	2.62	2.94	6.39	1.00	1.06
100K-125K	15.25	12.75	2.90	3.43	3.86	9.00	1.50	1.62

Truck

TWL Wheel Weigher load cell - Totalcomp

Interchangeable with Intercomp PT300 load cell with blue cable.

2 mv/v, 0.05% nonlinearity, 1000/1000 ohms, 3 ft 4 cond cable, anodized aluminum. IP67.

<u>Part Number</u>	<u>Capacity</u>	<u>Weight</u>
TWL-10K	10,000 lb	12 lb



TWL-10K
Interchange for PT300

PT300 Wheel Weigher load cell - Intercomp

Original equipment for Intercomp PT300 Wheel Load scale.

1.3 mv/v, 0.05% nonlinearity, 1000/1000 ohms, 3 ft 4 cond cable, anodized aluminum. IP67.

<u>Part Number</u>	<u>Capacity</u>
000210-T Load cell, gray cable	10,000 lb
Old style 0.8 mv/v +/- 0.1 mv/v	

000196-T Load cell, blue cable	10,000 lb
New style 1.3 mv/v	



000196-T for PT300

Truck



TDE58

TDE58 Beam only - Totalcomp

Interchangeable with Sensortronics 65058.

3 mv/v, 0.03% nonlinearity, 800/700 ohms, 50 ft 4 cond cable, nickel plated steel, IP67.

Part Number	Capacity	Weight
TDE58-10K	10,000 lb	7 lb
TDE58-20K	20,000 lb	7 lb
TDE58-25K	25,000 lb	7 lb
TDE58-40K	40,000 lb	14 lb
TDE58-50K	50,000 lb	19 lb
TDE58-60K	60,000 lb	19 lb
TDE58-75K	75,000 lb	19 lb

Jun



Truck

65058 TSA Truck Scale Corner Assembly - Sensortronics

3 mv/v, 0.05% nonlinearity, 700/700 ohms, 35 ft 4 cond cable, IP67.
 NTEP 20,000 lb thru 75,000 lb.
 NTEP 86-046 M IIIIL 10,000 div

Part Number	Capacity	Weight
65058A-20K w/TSA	20,000 lb	49 lb
65058A-25K w/TSA	25,000 lb	49 lb
65058A-50K w/TSA	50,000 lb	102 lb
65058A-60K w/TSA	60,000 lb	102 lb
65058A-75K w/TSA	75,000 lb	102 lb



65058 w/TSA

65058 Beam only - Sensortronics

3 mv/v, 0.05% nonlinearity, 700/700 ohms, 35 ft 4 cond cable, nickel plated steel, IP67.
 NTEP 20,000 lb thru 125,000 lb.
 NTEP 86-046 M IIIIL 10,000 div

Part Number	Capacity	Weight
65058A-20K	20,000 lb	7 lb
65058A-25K	25,000 lb	7 lb
65058A-40K	40,000 lb	14 lb
65058A-50K	50,000 lb	21 lb
65058A-60K	60,000 lb	21 lb
65058A-75K	75,000 lb	21 lb
65058A-100K	100,000 lb	42 lb
65058A-125K	125,000 lb	42 lb



65058

Howe Richardson replacement

65058A-50K-1127	50,000 lb	14 lb
-----------------	-----------	-------

Dimensions in inches

Capacity	A	B	C	D	E	F	G	H	I	J
10K-25K	7.75	6.50	1.38	1.69	1.63	1.70	1.94	0.68	0.75	0.90
40K	10.25	8.50	1.93	1.94	2.00	2.10	2.44	0.81	1.00	1.12
50K-75K	10.25	8.50	1.93	2.44	2.54	2.65	2.94	1.06	1.00	1.37
100K-125K	15.25	12.75	3.13	2.90	3.30	3.43	3.86	1.62	1.50	1.80
150K-200K	19.25	15.25	4.00	3.80	4.44	5.12	5.80	1.62	2.00	2.37



TSA - Sensortronics Truck Scale Assembly

Mounting assembly is cast iron.

Part Number	Capacity	Weight
5825	10,000 - 25,000 lb	42 lb
5875	40,000 - 75,000 lb	81 lb



Truck



5223 w/EZ Mount II

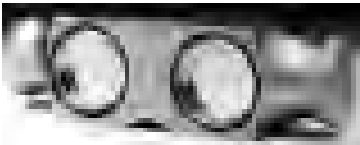


5223 w/ EZ Mount II - Revere Transducers Inc

3 mv/v, 0.03% nonlinearity, 700/700 ohm, 40 ft 4 cond cable, hermetically sealed, nickel plated steel.

NTEP 86-038 M IIIIL 10,000 div

Part Number	Capacity
5223-50K w/EZMII	50,000 lb
5223-65K w/EZMII	65,000 lb
5223-100K w/EZMII	100,000 lb
5223-125K w/EZMII	125,000 lb
5223-200K w/EZMII	200,000 lb



5223



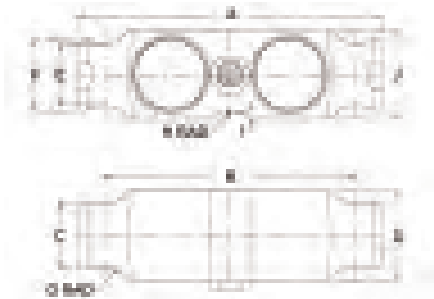
5223 beam only - Revere Transducers Inc

Replacement for Thurman TSC800 load cells, Unibridge DL9000, AirWay AW901, NV-Tech BLC-2.

3 mv/v, 0.03% nonlinearity, 700/700 ohm, 40 ft 4 cond cable, hermetically sealed, nickel plated steel.

NTEP 86-038 M IIIIL 10,000 div

Part Number	Capacity	Weight
5223-B10-50K-40P1	50,000 lb	18 lb
5223-B10-65K-40P1	65,000 lb	18 lb
5223-B10-100K-40P1	100,000 lb	18 lb
5223-B10-125K-40P1	125,000 lb	18 lb
5223-B10-200K-40P1	200,000 lb	32 lb



Dimensions in inches

Capacity	A	B	C	D	E	F	G	H	I	J
50K-100K	10.25	8.50	2.20	3.00	2.06	2.40	1.00	1.00	0.28	3.00

EZ Mount II only - Revere Transducers Inc

Mounting assembly is plated steel.

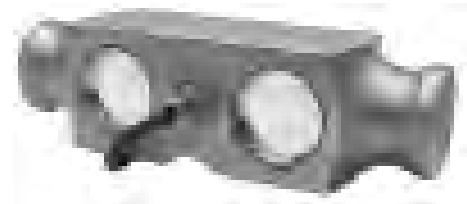
Part Number	Capacity	Weight
EZ Mount II for 5223	50K - 65K	148 lb
EZ Mount II for 5223	100,000 lb	148 lb
EZ Mount II for 5223	200,000 lb	715 lb

Truck

TDE23 beam only - Totalcomp

Interchangeable with RTI Model 5223
 3 mv/v, 0.03% nonlinearity, 700/700 ohm, 35 ft 4 cond cable, nickel plated steel w/welded covers, IP67.

Part Number	Capacity	Weight
TDE23-50K	50,000 lb	21 lb
TDE23-65K	65,000 lb	21 lb
TDE23-75K	75,000 lb	21 lb



TDE23

Dimensions in inches

Capacity	A	B	C	D	E	F	G	H	I	J
20K-40K	8.25	7.25	2.44	1.94	1.63	2.00	0.50	0.25	0.75	0.50
50K-150K	10.25	8.50	2.90	2.90	2.05	2.40	1.00	0.25	0.75	1.00
200K	11.50	10.00	3.40	3.40	2.35	2.75	1.50	0.40	0.75	1.50



GDE23 beam only - General sensor

Interchangeable with RTI Model 5223.
 3 mv/v, 0.03% nonlinearity, 800/700 ohm, 50 ft 4 cond cable, nickel plated steel, IP67.

Part Number	Capacity	Weight
GDE23-20K	20,000 lb	16 lb
GDE23-25K	25,000 lb	16 lb
GDE23-40K	40,000 lb	16 lb
GDE23-50K	50,000 lb	16 lb
GDE23-65K	65,000 lb	16 lb
GDE23-75K	75,000 lb	16 lb
GDE23-100K	100,000 lb	16 lb



GDE23

Dimensions in inches

Capacity	A	B	C	D	E	F	G	H	I	J
20K-40K	8.25	7.25	2.44	1.94	1.63	2.00	0.50	0.25	0.75	0.50
50K-100K	10.25	8.50	2.90	2.90	2.05	2.40	1.00	0.25	0.75	1.00

